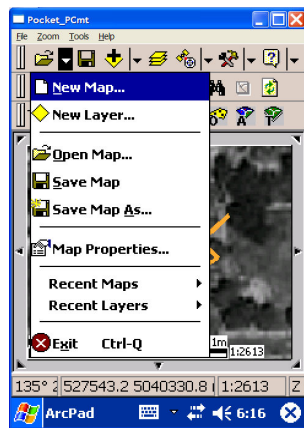


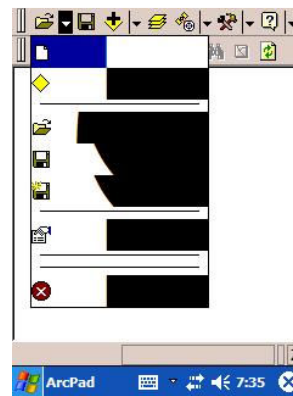
## Installation of ArcPad 6.0.3 onto the Handheld Unit – A Few Notes

Follow all installation instructions detailed in the document “WIMS 3 Installation Guide & Checklist, ArcPad 7.0.1.” The installation process should be exactly the same for ArcPad 6.0.3 as for ArcPad 7.0.1, but there may be a pull-down menu error for Pocket PC units (Step #6) that use Microsoft Mobile Windows 2003, that can be easily remedied by applying a patch.

To check if you need to install this patch, tap “File” within ArcPad. If the File pull-down menu looks normal (you can see text for each function), no further steps are necessary. If the pull-down menu does not have text (the menu is darkened-out), and each function takes a long time to process, you must install this ArcPad patch.



ArcPad fully functional and no need to install the ArcPad patch.



If you see something like this when you depress the “File” pull-down menu in ArcPad, you must install the ArcPad patch.

To install this patch, download it from

<http://support.esri.com/index.cfm?fa=knowledgebase.techarticles.articleShow&d=27073>

Next, move the entire unzipped .cab file onto your Pocket PC (using Windows Explorer in ActiveSync), then tap on the application on the Pocket PC to run it. After it has been installed, turn-off your Pocket PC. The next time you turn it on, ArcPad should open and run normally.