

# Quick Steps for Using WIMS in ArcPad 7

## 1. Launch ArcPad

PPC Start Menu > Start > Programs > ArcPad

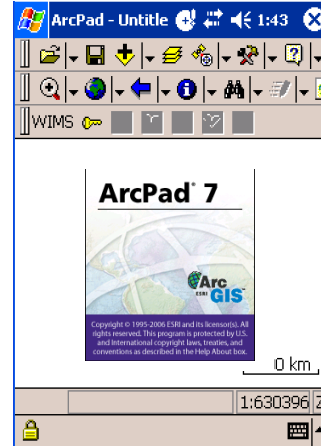
Press the MS flag and select the ArcPad icon



to launch ArcPad.




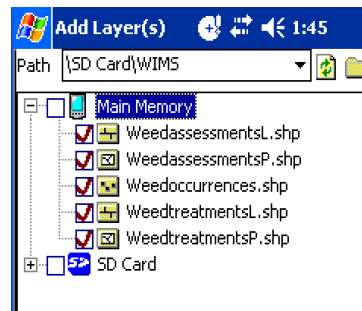
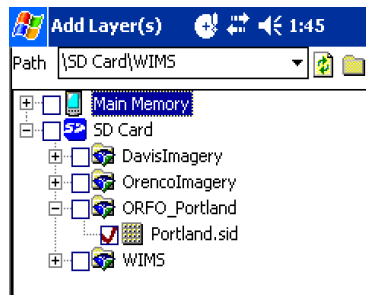
Main toolbar  
Browse toolbar  
WIMS toolbar



Blank ArcPad screen

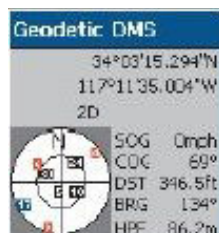
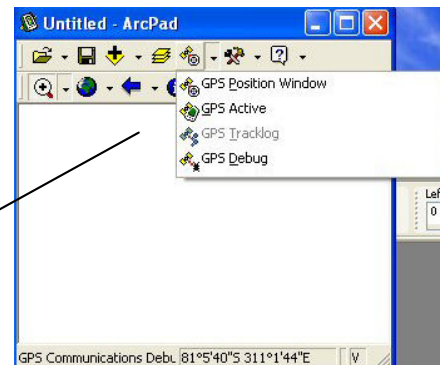
## 2. Add imagery and layers

Do this by pressing the “Add-layers” button  on the Main Toolbar, then checking-off the map and layers that apply, then OK.




## 3. Activate GPS

Turn-on your GPS unit by tapping the “GPS tools” button, then tapping the “GPS Active” button. This will turn-on the GPS unit, and you can also tap on the “GPS Position Window” to follow your progress in obtaining satellite fixes.



Once you obtain a GPS fix, you will be able to see your location on the map with the symbol. Now you can create an Occurrence Record by first obtaining a GPS point.



*Note: You can increase or decrease your mapview by using the “Zoom” button  then tapping or dragging your stylus in the area that you want magnified.*

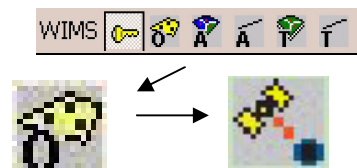
*Note: When collecting data in the field, you can turn-off the handheld unit between data collection sites to preserve the battery. However, you must make the GPS unit inactive before turning-off the Pocket PC (or the Pocket PC may crash). When you are ready to collect data again, simply make the GPS Active once again. If your Pocket PC unit gets stuck (crashed), do a soft reset to restart ArcPad.*

#### **4. Creating an Occurrence Record**


##### ***Obtaining a GPS location point to create an Occurrence***

When you have located your weed (patch), stand in the middle of it and:

- i. Press the WIMS “Key” on the WIMS Toolbar
- ii. Press the “Occurrence” button
- iii. Press the “Capture GPS Point” button



This will automatically capture that GPS location and will open a blank Occurrence form. Fill-in the required (first 2 tabs) and desired information, then <OK> to save it. You will then see that Occurrence as a red dot on the map.

Alternatively, if you want to ***Create an Occurrence Point using your Stylus***, follow steps i and ii above, then press the “point”  button, then press on your screen using your stylus. A blank Occurrence form will then appear. Fill-in the required and desired information, then <OK> to save it.

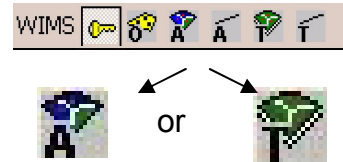
#### **5. Creating an Assessment or Treatment Record**

Assessment and Treatment locations are both recorded as polygons or lines in ArcPad, and are created in the same way. There are 4 ways to create these types of polygons:

- A. Walking around a patch and capturing points along the way,
- B. Streaming (continuous) GPS capture while walking around a patch,
- C. Walking a line and capturing a point at start and finish, or
- D. Drawing-in the infestation using your stylus.

After you have created an Occurrence Record, move to the perimeter of your weed patch.

- i. Make sure that your GPS unit is active
- ii. Make sure that the WIMS “Key” is still depressed
- iii. Press the “Assessment” or “Treatment” button



**A. Walking around a patch and capturing points along the way**

Follow steps i to iii above, then

- iv. Press the “Polygon” button then the “Add GPS Vertex” button. This will then launch a GPS point capture, and will do so every time you press the “Add GPS Vertex” button again (when you change directions). Each time you add a GPS location, it will take about 20 seconds to capture that vertex. When you have completed walking around the perimeter of your weed patch,



- v. Press the “Proceed” button to open a blank Assessment or Treatment form.
- vi. Fill-in the record, then “OK” to save.



**B. Streaming (continuous) GPS capture while walking around a patch**

- iv. Press the “Polygon” button then the “Add GPS Vertices Continuously” button. This will automatically start capturing GPS points every few seconds. When you have completed walking around the perimeter of your weed patch,

- v. Press the “Proceed” button to open a blank Assessment or Treatment form.



- vi. Fill-in the record, then “OK” to save.

### C. Walking a line and capturing a point at start and finish

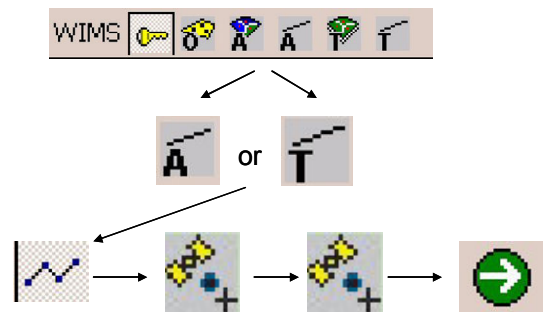
Follow steps i and ii above, then

iii. Press the “Assessment Line” or “Treatment Line” button

iv. Press the “Polyline” button, then “Add GPS Vertex” button at the start and finish of your line. When you have completed walking from the start to the end of your line,

vi. Press the “Proceed” button to open a blank Assessment or Treatment form.

vii. Fill-in the record, then “OK” to save.



### D. Drawing-in the infestation using your stylus

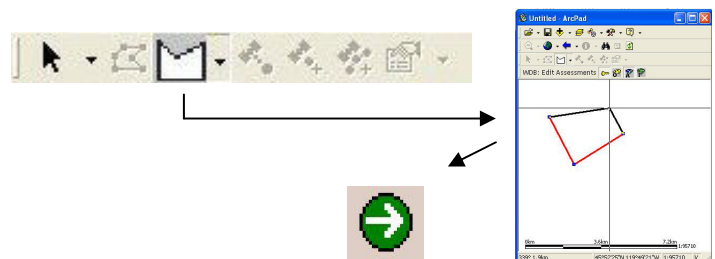
To use this method, your GPS unit does not need to be active. However, you might find that having your GPS unit on is useful when you are in the field to determine your exact location on your image. Also, when using this method, zoom-in on your image as much as possible so that you can draw-in your infestation as accurately as possible.

i. Make sure that the WIMS “Key” is still depressed

ii. Press the “Assessment” or “Treatment” (or the Assessment or Treatment Line) button

iii. Press the “Polygon” button.

iv. Next, use your stylus to outline the infestation perimeter on your screen. Do this by first tapping out the perimeter of your weed patch on the screen. When you have completed drawing-in the perimeter of your weed patch,



vi. Press the “Proceed” button to open a blank Assessment or Treatment form.

vii. Fill-in the record, then “OK” to save.

## A Few more WIMS-ArcPad Functions

### Editing an Existing Occurrence, Assessment, or Treatment Record

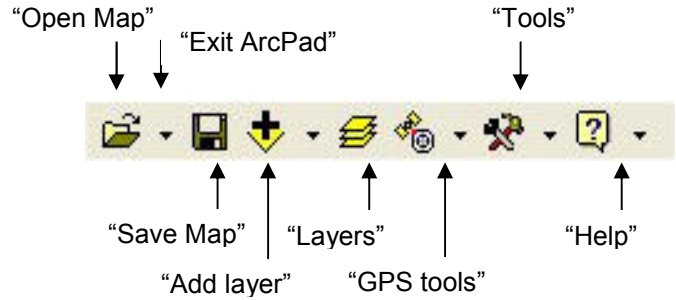
1. Press the “down arrow” next to the “Start/Stop Editing” button (from the Browse toolbar), and select what type of Record you want to edit,
2. Next, press your stylus on the exact feature record on the screen that you want to edit. That record will become a bright blue color, and you will also see a faint black-dashed box outlining your choice).
3. To open that record, then press the “Show Feature Properties” button.
4. Make any changes to that record, then press <OK> when done editing. It will automatically save your edits.



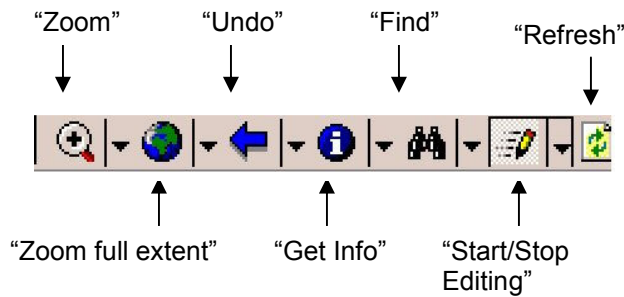
### Deleting an Existing Occurrence, Assessment, or Treatment Record

Deleting an existing data record is accomplished the same way as Editing an existing record (see above), except that instead of just pressing the “Show Feature Properties” button (in Step 3), press the down-arrow next to the “Properties” button and select “Delete.”

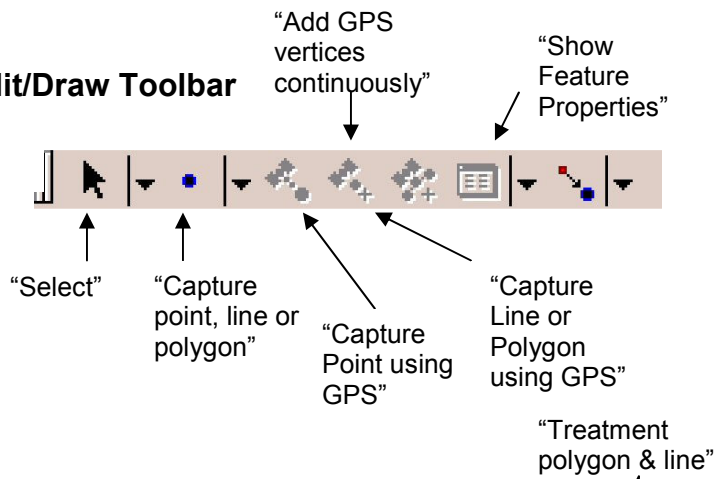
## Main Toolbar



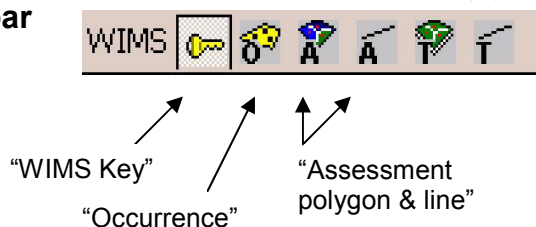
## Browse Toolbar



## Edit/Draw Toolbar



## WIMS Toolbar



Note:

If the WIMS toolbar does not initially appear on your ArcPad PPC screen, you can add this toolbar by choosing Tools > Toolbars > WIMS.

The Edit/Draw Toolbar does not appear on the PPC screen until the WIMS toolbar is activated by choosing one of the WIMS function buttons.

## Bottom Toolbar

